



LIVERMORES
THE ESTATE AGENTS

2 Bedrooms

House - End Terrace

Located in Dartford

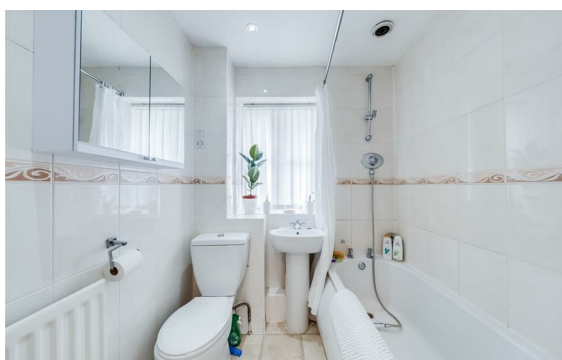
£325,000



dartford@livermores.co.uk

www.livermores.co.uk

01322 228090



GUIDE PRICE £325,000 TO £350,000 Located in a popular cul-de-sac in Dartford, this charming two-bedroom end terrace house offers a delightful blend of comfort and convenience. Perfectly situated within a mile of Dartford train station, this property is ideal for commuters and families alike. The property has a lovely reception room that is perfect for relaxation or entertaining guests. The well-presented kitchen has direct access to the well maintained garden. The property has 2 bedrooms, and a well presented family bathroom to the first floor. Additionally, the house includes a garage and off-road parking, ensuring that you have convenient access to your vehicle. This end terrace home is not only well-maintained but is a perfect first time buy or investment. VIEWING HIGHLY RECOMMENDED

Energy Efficiency Rating: C

Agents Note: Whilst every care has been taken to prepare these particulars, they are for guidance purposes only. All measurements are approximate and are for general guidance purposes only and whilst every care has been taken to ensure their accuracy, they should not be relied upon and potential buyers/tenants are advised to recheck the measurements.

LIVERMORES
THE ESTATE AGENTS

1 Hythe Street
Dartford
Kent
DA1 1BE

01322 228090

dartford@livermores.co.uk

www.livermores.co.uk